



Your Solutions Partner

INSTRUCTIONS

HS2 Lid Stop Replacement Kit 600532

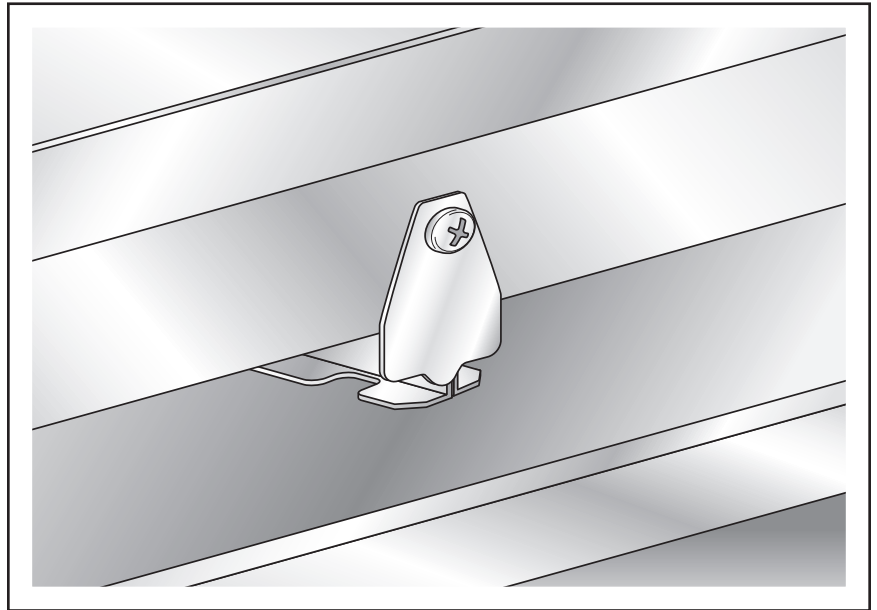
This kit applies for units built with serial numbers between:

06170354 and **08172054**

06170354

↑ Specifies the Month Made
 ↑ Specifies the Year Made
 ↑ Sequential Digits

The serial number above indicates that the unit was built in the month of **June** of **2017** and was the **354** item built.



CAUTION: Please read this manual completely before attempting to install, operate or service this equipment

This manual is Copyright © 2018 Duke Manufacturing Co. All rights reserved. Reproduction without written permission is prohibited. Duke is a registered trademark of the Duke Manufacturing Co.

Duke Manufacturing Co.

2305 N. Broadway
St. Louis, MO 63102
Phone: 314-231-1130
Toll Free: 1-800-735-3853
Fax: 314-231-5074

www.dukemfg.com

P/N 161466
REV C Date 4/12/2018

TOOLS NEEDED AND PARTS INCLUDED

Tools Needed Not Included



Hammer



9/16" Box Wrench



Phillips Screwdriver



Cordless Drill

Parts/TOOLS Included In Kit



430516 Screw
10-32X1 - 32ea.



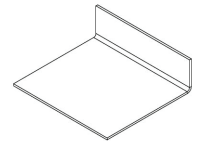
1059-0857
Spacer - 32ea.



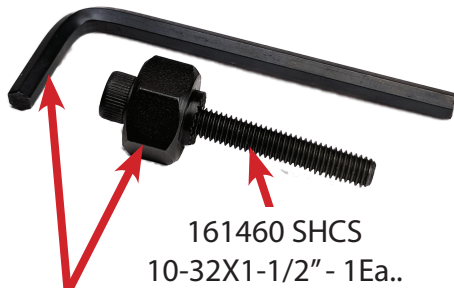
1059-0499
Lid Stop - 8ea.



161461 Nutsert
10-32 UNF 2B - 32ea.



161470
Shim Tools 1ea.



161462 Nutsert Tool Kit 1ea.



520506 Loctite
3 Ea.



161465 Drillbit 1ea.



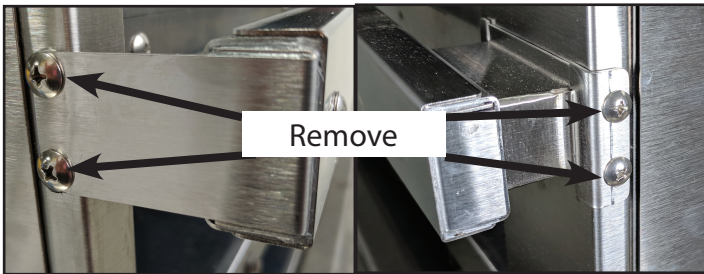
REPLACING LID RETAINER CLIP AND BOLT WITH NUTSERT AND BOLT

Step 1 Unplug unit and let cool down.

 **CAUTION** *Not completing this step could cause bodily injury.*

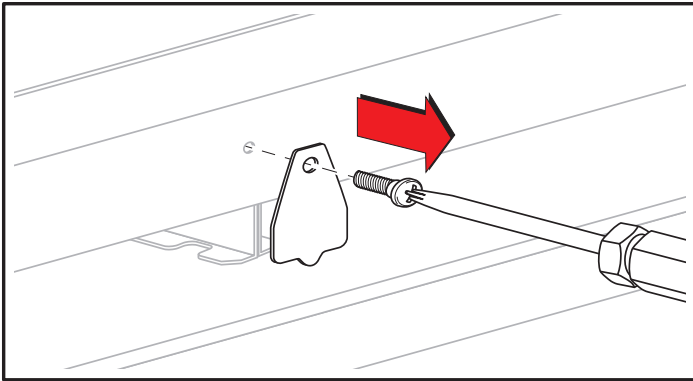
NOTE: To gain access to the lower lid stops, the timer bars will need to be lowered by removing the two (2) screws at each end of the timer bars.

Lower timer bars gently do not disconnect wires. Only lower one timer bar at a time.

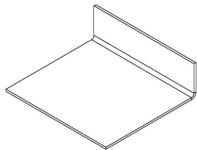
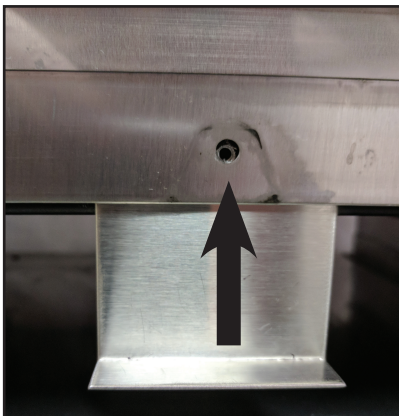


Step 2 Using a Phillips Screwdriver remove the Lid Stop from the unit and discard bolt and bushing.

NOTE: Retain the lid stop for re-use.

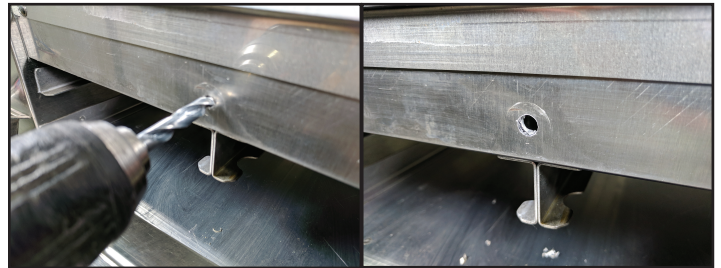
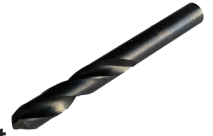


Step 3 It is necessary to remove the nut jam from behind the faceplate. Using the Shim tool provided with kit. Insert behind the faceplate and lift up.

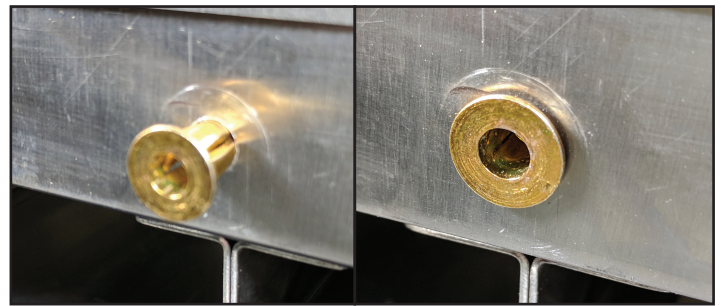


Step 4 Using the drill bit, enclosed in the kit. Drill the hole larger to make room for the new nutsert.

Note: Drillbit with kit is sized for the Nutsert



Step 5 Insert the nutsert into the drilled hole and tap in with a hammer until flush.



Step 6 Take the Nutsert tool and thread into the nutsert.

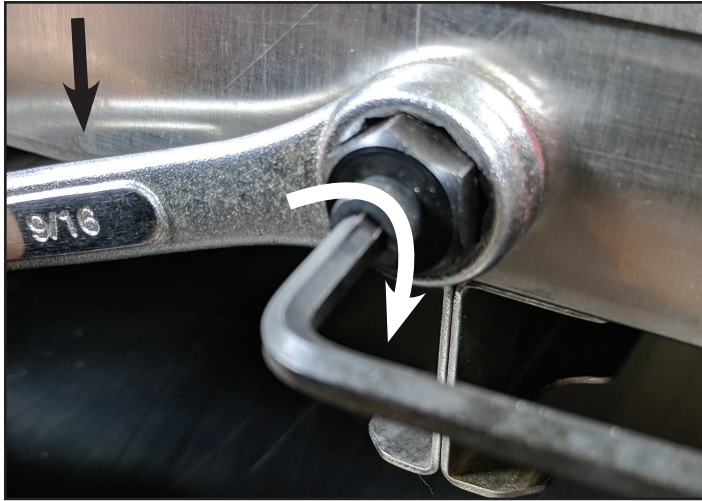


REPLACING LID RETAINER CLIP AND BOLT WITH NUTSERT AND BOLT

Step 7 Using a 9/16 Box Wrench Hold the large nut of the Nutinsert tool while turning the 10-32 Screw **clockwise** with the allen wrench provided until the nutsert bottoms out.

CAUTION If the nutsert is not tight it will spin.

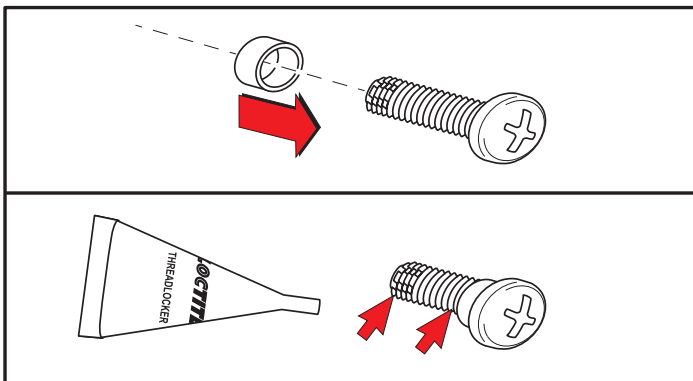
Note: Using a little WD40 on the Threads of the nutsert tool will help with the installation.



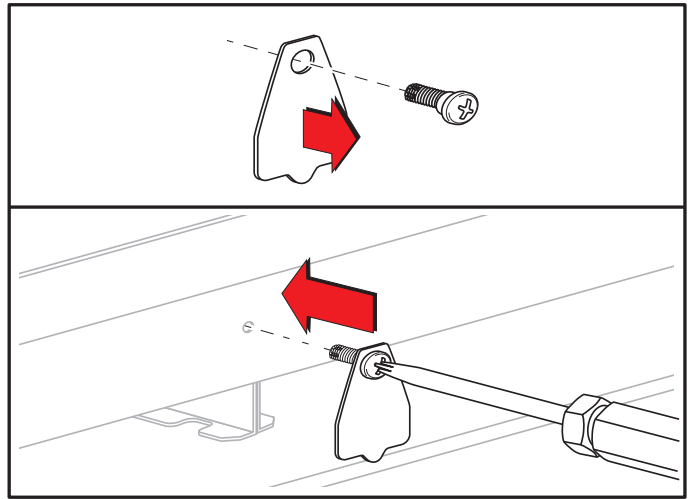
Step 8 Remove the nutsert setting tool by turning the the 10-32 Screw **Counter Clockwise**.

NOTE: If nut sert is loose you need to tighten more.

Step 9 Take one 10-32 Screw and slide Bushing on and apply a small amount of Loctite 242 on the treads.



Step 10 Slide Lid Stop all the way up onto the new bolt and bushing.



Step 11 Using a phillips screwdriver secure the new assembly into the new nutsert tightly.

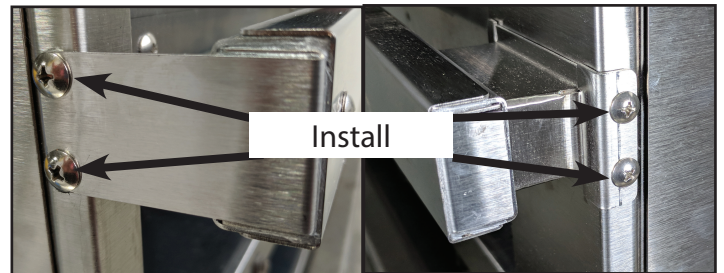
NOTE: The spacer will allow the Lid Stop to swing freely. Do not over-torque.

Step 12

Repeat steps for all other lid stops needing repair.

Step 13

Re-attach the timer bars making sure not to pinch any wires.



Step 14

Plug in unit and verify unit operates correctly.



Your Solutions Partner

Duke Manufacturing Co.

2305 N. Broadway

St. Louis, MO 63102

Phone: 314-231-1130

Toll Free: 1-800-735-3853

Fax: 314-231-5074

www.dukemfg.com