



Broiler Refurbishment

North America Only

The Duke Flexible Batch Broiler was built to last.

Your Flexible Batch Broiler was designed to last and allow ease of access for technicians and maintenance thanks to its modular design. Your broiler can last decades with proper service. Flexible Batch Broilers have proudly served in Burger King restaurants since 2006.



- ✓ Fastest Batch Cook Time
- ✓ Easier to Clean and Maintain
- ✓ Proven Workhorse Since 2006
- ✓ Improved IR Burner
- ✓ Affordable Refurbishment Kits Offer Great ROI



Protect your investment by extending your broilers' long life by upgrading with the below [IR Burner](#) or with any of the [refurbishment kits](#) on the back of this flyer.

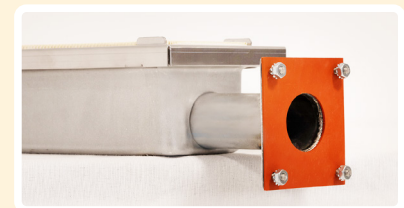
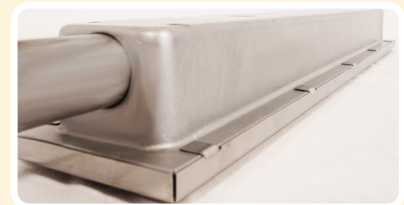
Improved IR Burner



Part # **176901** for natural gas and propane gas units

New IR burner with increased durability and longevity:

- **Single piece retainer & stamped housing with rounded corners**
 - » Adds significant rigidity & resistance to flexing
 - » Eliminates rivets and resultant stress to ceramic tile
 - » Minimizes assembly variations
- **Floating retainer plate**
 - » Allows for expansion/contraction, reducing stress to ceramic tiles
- **Flame sensor screen no longer needed**
 - » Eliminating common stress failure point
- **Consistency with installation**
 - » Formed silicone gasket



To purchase the parts on this flyer

Parts Town www.partstown.com (877) 962-7756

See back for refurbishment kits



DUKE CORPORATE:
U.S. & CANADA
2305 N. Broadway
St. Louis, MO 63102

Duke Customer Care

tmertz@dukemfg.com
 1.800.279.3853 Ext 1605



Broiler Refurbishment

North America Only

Refurbishment Kits



Mini Refurbishment Kit | Part # **176855** for natural gas, 11 parts
Part # **176856** for propane gas, 11 parts

Takes
as little as
2 hours
to install!

The **mini refurbishment kit** is intended for those franchisees that carry some parts such as sensors and igniters.

Full Refurbishment Kit | Part # **176838** for natural gas, 28 parts
Part # **176841** for propane gas, 28 parts

The **full refurbishment kit** is intended for those franchisees that may not have maintenance personnel on staff and require almost all the parts on a broiler. (conveyor motor, flame arrestor and IR burners not included).

NEW **Upper Gas Line Kit** | Part # **176851**

The **Upper Gas Line** kit will save you time in trying to make old gas line nuts and bushings work properly when reinstalling the IR burners. New gas lines, bushings and nuts will eliminate this wasted time and get your broiler back up and running quicker.

NEW **Harness Kit** | Part # **176852**

Avoid electrical issues by replacing your wire harnesses. Duke offers an easily installed wire harness kit.

NEW **Removable Panel Kit** | Part # **176853**

There can be a lot of time wasted trying to make old broiler panels work properly; this one-time cost will eliminate this burden saving you and your team valuable time.

NEW **Lower Flue Kit** | Part # **176854**

The lower flue provides the base for your IR burner. If this base is cracked, warped or anything other than flat, your IR burner will not have a level surface to support it. Protect your investment with a new lower flue to help maximize the life of your new IR burners.

To purchase the parts on this flyer

Parts Town  www.partstown.com  **(877) 962-7756**



Your Solutions Partner

**DUKE CORPORATE:
U.S. & CANADA**
2305 N. Broadway
St. Louis, MO 63102

Duke Customer Care

 tmertz@dukemfg.com
 **1.800.279.3853 Ext 1605**