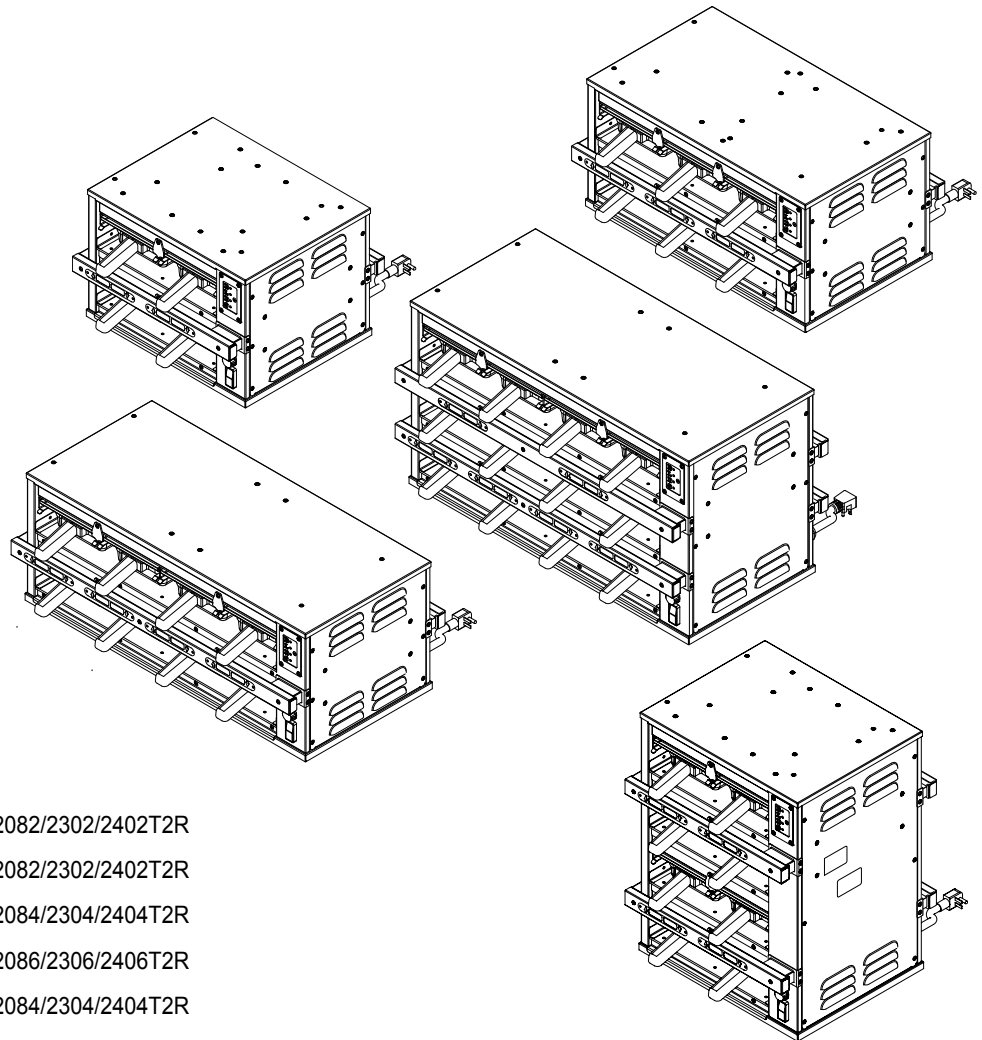




Your Solutions Partner

HS2 DUAL HEATSINK HOLDING UNITS



MODELS

HS2-22-2082/2302/2402T1R	HS2-22-2082/2302/2402T2R
HS2-23-2082/2302/2402T1R	HS2-23-2082/2302/2402T2R
HS2-24-2084/2304/2404T1R	HS2-24-2084/2304/2404T2R
HS2-34-2086/2306/2406T1R	HS2-34-2086/2306/2406T2R
HS2-42-2084/2304/2404T1R	HS2-42-2084/2304/2404T2R

*This manual is Copyright © 2017 Duke Manufacturing Co. All rights reserved.
Reproduction without written permission is prohibited. Duke is a registered
trademark of the Duke Manufacturing Co.*

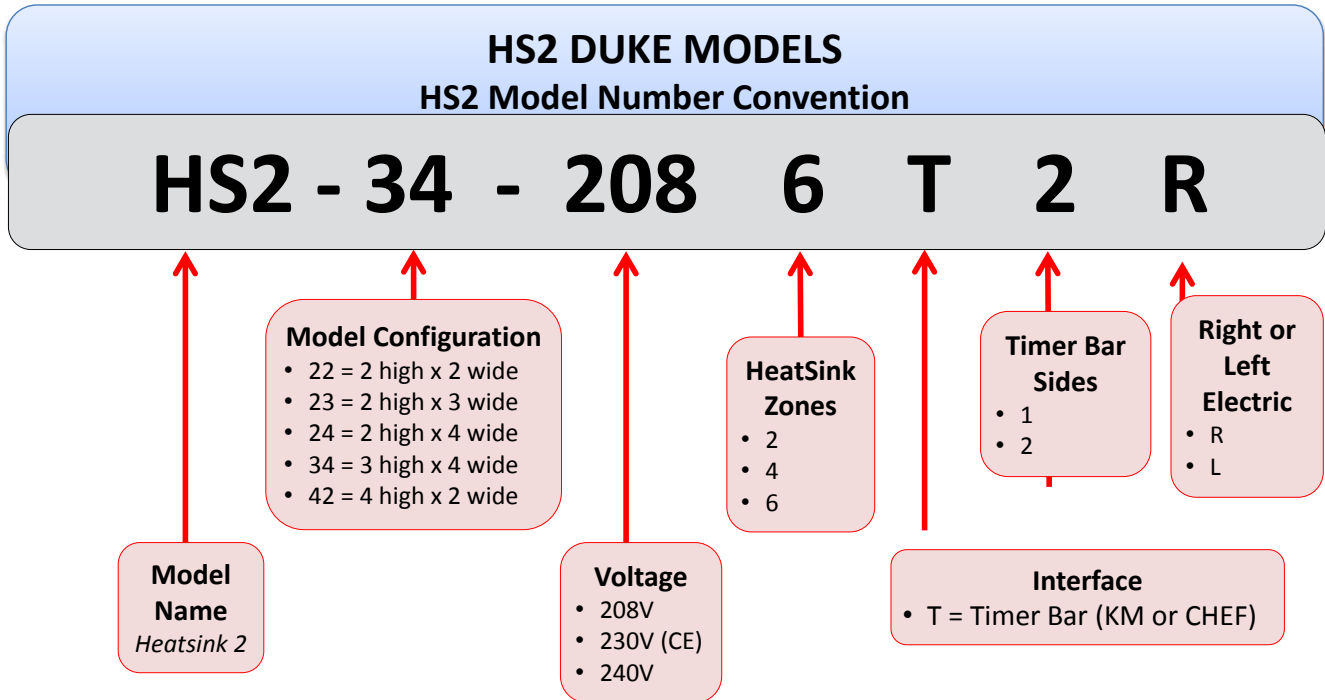
Duke Manufacturing Co.

2305 N. Broadway • St. Louis, MO 63102
800.735.3853 • 314.231.1130
Fax: 314-231-5074
www.dukemfg.com

TABLE OF CONTENTS

HS2 MODEL NUMBER CONVENTION	3
TIMER BAR MODELS (HS2-22-2082/2302/2402 T1R & T2R)	4
Figure: PL-2 TIMER BAR MODELS (HS2-22-2082/2302/2402 T1R & T2R)	4
Table: PL-2 TIMER BAR MODELS (HS2-22-2082/2302/2402 T1R & T2R)	5
TIMER BAR MODELS (HS2-23-2082/2302/2402 T1R & T2R)	6
Figure: PL-4 TIMER BAR MODELS (HS2-23-2082/2302/2402 T1R & T2R)	6
Table: PL-4 TIMER BAR MODELS (HS2-23-2082/2302/2402 T1R & T2R)	7
TIMER BAR MODELS (HS2-24-2084/2304/2404 T1R & T2R)	8
Figure: PL-6 TIMER BAR MODELS (HS2-24-2084/2304/2404 T1R & T2R)	8
Table: PL-6 TIMER BAR MODELS (HS2-24-2084/2304/2404 T1R & T2R)	9
TIMER BAR MODELS (HS2-34-2086/2306/2406 T1R & T2R)	10
Figure: PL-8 TIMER BAR MODELS (HS2-34-2086/2306/2406 T1R & T2R)	10
Table: PL-8 TIMER BAR MODELS (HS2-34-2086/2306/2406 T1R & T2R)	11
TIMER BAR MODELS (HS2-42-2084/2304/2404 T1R & T2R)	12
Figure: PL-10 TIMER BAR MODELS (HS2-42-2084/2304/2404 T1R & T2R)	12
Table: PL-10 TIMER BAR MODELS (HS2-42-2084/2304/2404 T1R & T2R)	13
WIRING DIAGRAMS	14
HS2-22 Models	14
HS2-23 Models	15
HS2-24 Models	16
HS2-34 Models	17
HS2-42 Models	18

HS2 MODEL NUMBER CONVENTION



TIMER BAR MODELS (HS2-22-2082/2302/2402 T1R & T2R)

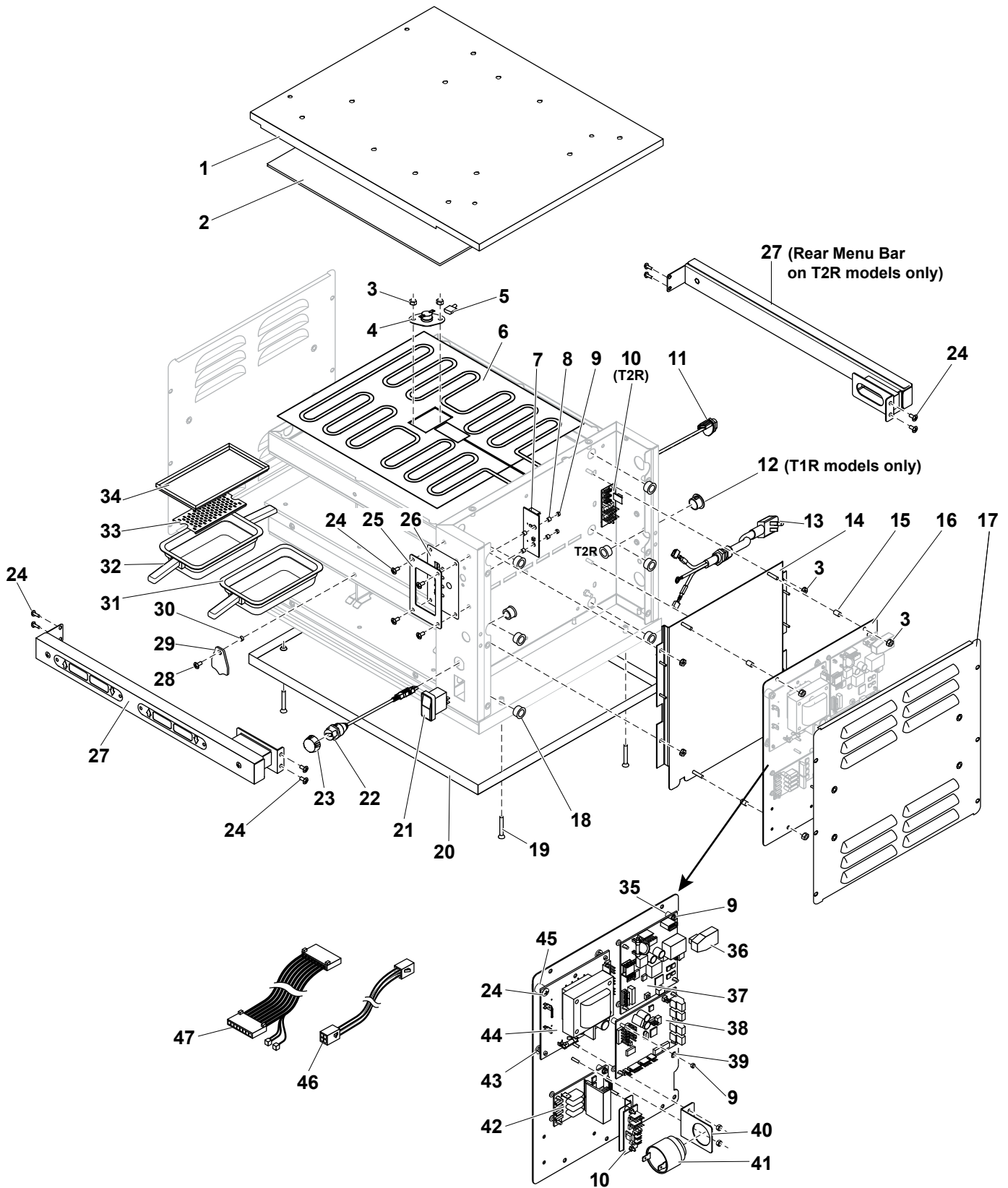


Figure: PL-1 TIMER BAR MODELS (HS2-22-2082/2302/2402 T1R & T2R)

TIMER BAR MODELS (HS2-22-2082/2302/2402 T1R & T2R)

ITEM	PN	DESCRIPTION	QTY	
			T1R MODELS	T2R MODELS
1	1059-0521	HS2, TOP 2W RF	1	
2	1059-0528	HS2, INSULATION 1/8" 2W	1	
3	155680	NUT, KEPS 8-32 HEX ZP	56	
4	158312	THERMOSTAT, HI-LIMIT 300 DEG W/FLANGE	4	
5	222603	WIRE, JUMPER HS2 HEAT ELEMENT COM.	4	
6	225225	Heater, 2 wide 208v	4	
	229340	Heater, 2 wide 240v (230 & 240V Units)	4	
Not shown	158279	RTD, 1000 OHM-MEDIUM	A/R	
7	225184	DUKE DAY PART PCB	1	
8	225171	SPACER ROUND 1/4" X 1/8" IS DIA .115	12	
9	223470	NUT, 4-40 NYLON LOCKNUT	6	8
10	225181	ASY, TIMER BAR 5V POWER PCB	1	2
11	166111	MODULAR, JACK IP67	1	
12	1059-0723	HS2, MENU BAR HOLE PLUG	1	-
13	222170	CORD POWER 15 AMP 208/240V	1	
	160448	CORD POWER 16 AMP 230V IEC60309	1	
14	1059-0435	HS2, ASY, CTRL VENT DUCT 2H	1	
15	225168	SPACER, ALUM .250 OD X .375 LENGTH X #8 SCREW	4	
16	1059-0537	HS2, CRTL MTG PLATE 2H PEMS	1	
17	1059-0445	ACCESS PANEL 2H (208/240V Units = 2)	1 or 2	
	1059-0571	ACCESS PANEL 2H CE (Control Side of 230V Units)	1	
18	225173	HEYCO, SNAP BUSHING OCB-625	7	8
19	10280050	SCREW, 8-32X1-1/4 FL PH SS MACHINE	4	
20	1059-0456	HS2, BASE PAN 2W	1	
21	169629	SWITCH, SEALED CARLING	1	
22	225236	USB Adapter	1	
23	225237	USB Cover	1	2
24	279500	SCREW, 8-32X1/2" PTHMS 18-8SS	50	
25	1059-0394	HS2, BEZEL DAYPART MYLAR	1	
26	225165	MYLAR DAYPART	1	
27	1059-0750	HS2, ASY MENU BAR 2W	1	2
28	223450	SCREW, 8-32X3/8" PHIL TRUSS HD MACHINE, S/S NYLOK PATCH	4	
29	1059-0499	HS2, PAN STOP COVER	4	
30	225238	HS2, Spacer Cover Stop	4	
31	156602	Pan, Single Handle	1	
32	156634	Pan, Double Handle	1	
33	E030951	TRIVET, METAL, 1/3 SIZE PAN	4	
34	1059-0498	HS2 Pan Cover	1	
35	166100	SPACER, TUBE NYLON 0.250D X 0.125ID X 0.375H	1	
36	166184	USB, 2.0 MALE TO FEMALE RT. ANGLE ADAPTER	1	
37	166101	SUPPORT, LOCK-IN PC	1	
38	ELC0001-4	PCB, IO3, HS2	1	
39	166102	WASHER, 0.375OD X 0.13ID X 0.062THK	1	
40	1059-0384	HS2, BUZZER MTG BRKT	1	
41	512766	BUZZER, ULTRA LOUD CONTINUOUS TONE	1	
42	166114	TRIAC PCB ASY	1	
43	176770	ACM PCB ASY, FB BT	1	
44	120011	PCB, 12V PWR 208/230V	1	
45	120158	SPACER, NUT .375"	2	
46	225219	Harness, timer bar exit, quad	1	
47	225216	Day part harness	1	
Not shown	225221	HARNESS IDC 12V & CAN	1	
Not shown	166105	JUMPER, HEAT TRIAC PCB	1	
Not shown	225234	HARNESS MAIN AC – HS2	1	
Not shown	212106	CONNECTOR WAGO 5 CONDUCTOR 222-415	2	
Not shown	166110	HARNESS, AC DMC 2X2	1	
Not shown	118027	Cable, CAT5E Ethernet, Black, 25ft	1	

Table: PL-1 TIMER BAR MODELS (HS2-22-2082/2302/2402 T1R & T2R)

TIMER BAR MODELS (HS2-23-2082/2302/2402 T1R & T2R)

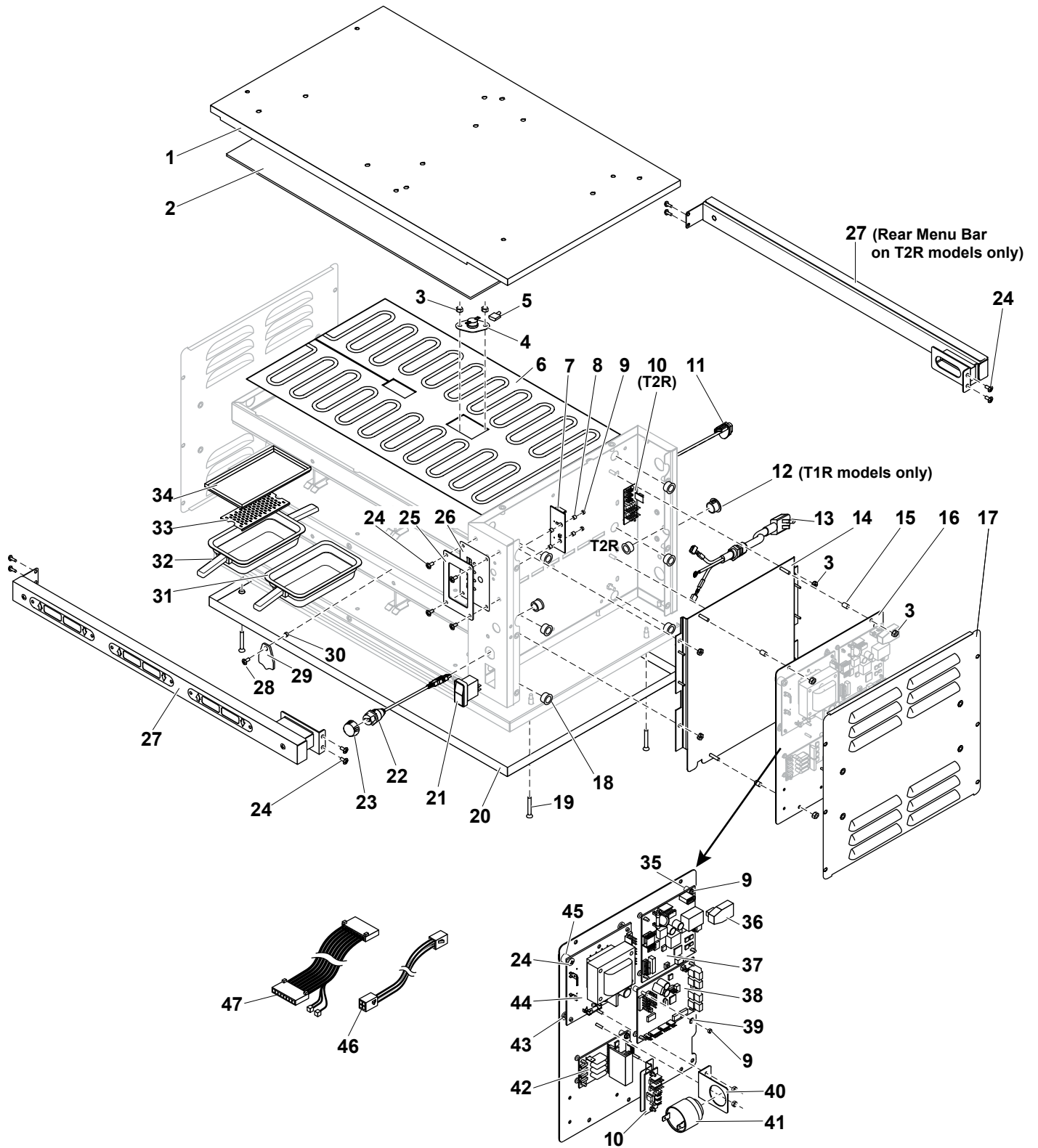


Figure: PL-2 TIMER BAR MODELS (HS2-23-2082/2302/2402 T1R & T2R)

TIMER BAR MODELS (HS2-23-2082/2302/2402 T1R & T2R)

ITEM	PN	DESCRIPTION	QTY	
			T1R MODELS	T2R MODELS
1	1059-0519	HS2, TOP 3W RF	1	
2	1059-0255	INSULATION 1/8" 3W	1	
3	155680	NUT, KEPS 8-32 HEX ZP	65	
4	158312	THERMOSTAT, HI-LIMIT 300 DEG W/FLANGE	2	
5	222603	WIRE, JUMPER HS2 HEAT ELEMENT COM.	4	
6	225223	Heater, 3 wide 208v	4	
	229341	Heater, 3 wide 240v (230 & 240V Units)	4	
Not shown	158279	RTD, 1000 OHM-MEDIUM	A/R	
7	225184	DUKE DAY PART PCB	1	
8	225171	SPACER ROUND 1/4" X 1/8" IS DIA .115	4	
9	223470	NUT, 4-40 NYLON LOCKNUT	9	11
10	225181	ASY, TIMER BAR 5V POWER PCB	1	2
11	166111	MODULAR, JACK IP67	1	
12	1059-0723	HS2, MENU BAR HOLE PLUG	1	-
13	222170	CORD POWER 15 AMP 208/240V	1	
	160448	CORD POWER 16 AMP 230V IEC60309	1	
14	1059-0435	HS2, ASY, CTRL VENT DUCT 2H	1	
15	225168	SPACER, ALUM .250 OD X .375 LENGTH X #8 SCREW	4	
16	1059-0537	HS2, CRTL MTG PLATE 2H PEMS	1	
17	1059-0445	ACCESS PANEL 2H (208/240V Units = 2)	1 or 2	
	1059-0571	ACCESS PANEL 2H CE (Control Side of 230V Units)	1	
18	225173	HEYCO, SNAP BUSHING OCB-625	7	8
19	10280050	SCREW, 8-32X1-1/4FL PH SS MACHINE	4	
20	1059-0452	HS2, BASE PAN 3W	1	
21	169629	SWITCH, SEALED CARLING	1	
22	225236	USB Adapter	1	
23	225237	USB Cover	1	
24	279500	SCREW, 8-32X1/2" PTHMS 18-8SS	54	
25	1059-0394	HS2, BEZEL DAYPART MYLAR	1	
26	225165	MYLAR DAYPART	1	
27	1059-0719	HS2, ASY MENU BAR 3W	1	2
28	223450	SCREW, 8-32X3/8" PHIL TRUSS HD MACHINE, S/S NYLOK PATCH	8	
29	1059-0499	HS2, PAN STOP COVER	8	
30	225238	HS2, Spacer Cover Stop	8	
31	156602	Pan, Single Handle	1	
32	156634	Pan, Double Handle	1	
33	E030951	TRIVET, METAL, 1/3 SIZE PAN	6	
34	1059-0498	HS2 Pan Cover	1	
35	166100	SPACER, TUBE NYLON 0.250D X 0.125ID X 0.375H	1	
36	166184	USB. 2.0 MALE TO FEMALE RT. ANGLE ADAPTER	1	
37	166101	SUPPORT, LOCK-IN PC	1	
38	ELC0001-4	PCB, IO3, HS2	1	
39	166102	WASHER, 0.375OD X 0.13ID X 0.062THK	1	
40	1059-0384	HS2, BUZZER MTG BRKT	1	
41	512766	BUZZER, ULTRA LOUD CONTINUOUS TONE	1	
42	166114	TRIAC PCB ASY	1	
43	176770	ACM PCB ASY, FBBT	1	
44	120011	PCB, 12V PWR 208/230V	1	
45	120158	SPACER, NUT .375"	2	
46	225219	Harness, timer bar exit, quad	1	2
47	225216	Day part harness	1	
Not shown	225221	HARNESS IDC 12V & CAN	1	
Not shown	166105	JUMPER, HEAT TRIAC PCB	1	
Not shown	225234	HARNESS MAIN AC – HS2	1	
Not shown	212106	CONNECTOR WAGO 5 CONDUCTOR 222-415	2	
Not shown	166110	HARNESS, AC DMC 2X2	1	
Not shown	118027	Cable, CAT5E Ethernet, Black, 25ft	1	

Table: PL-2 TIMER BAR MODELS (HS2-23-2082/2302/2402 T1R & T2R)

TIMER BAR MODELS (HS2-24-2084/2304/2404 T1R & T2R)

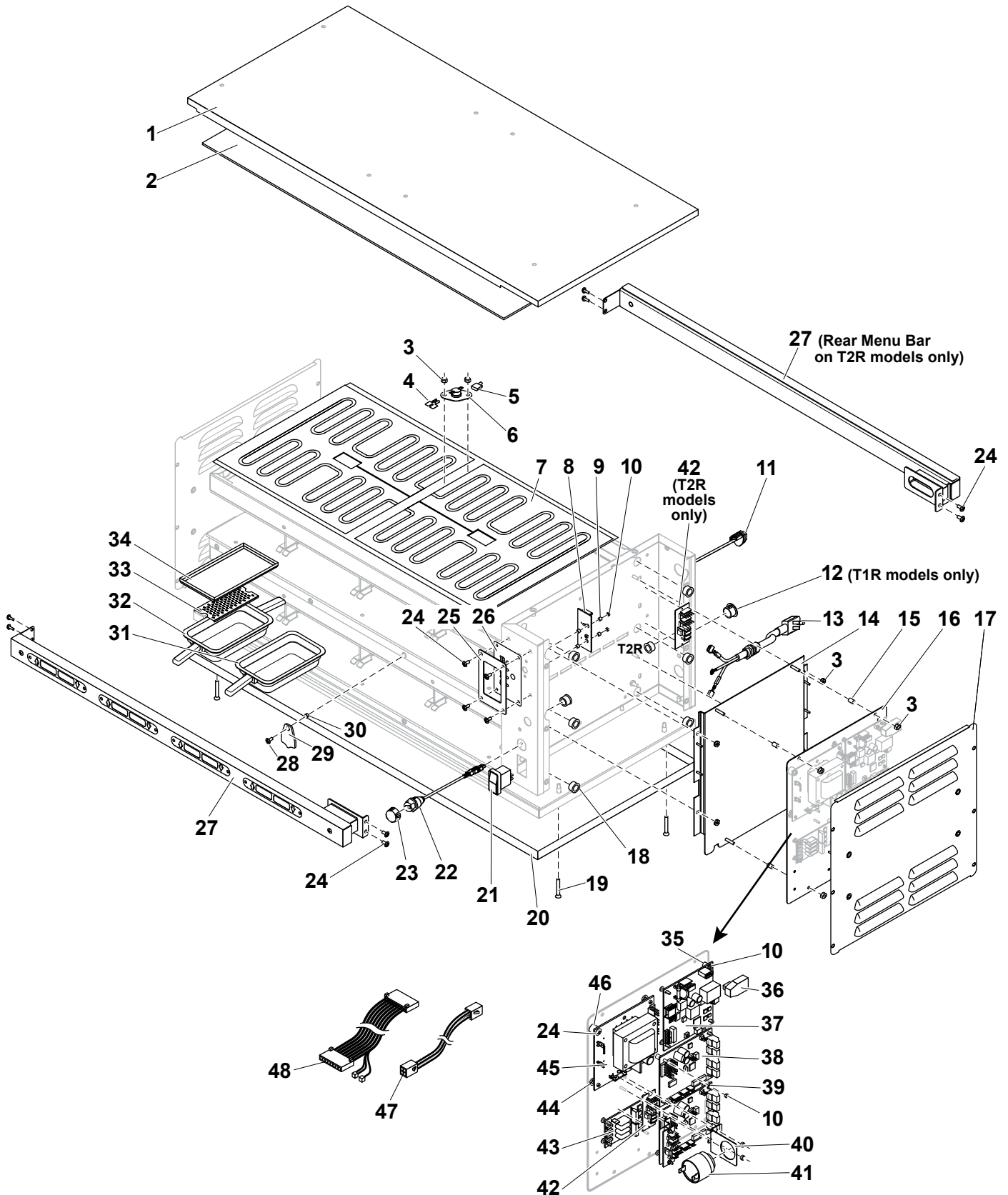


Figure: PL-3 TIMER BAR MODELS (HS2-24-2084/2304/2404 T1R & T2R)

TIMER BAR MODELS (HS2-24-2084/2304/2404 T1R & T2R)

ITEM	PN	DESCRIPTION	QTY	
			T1R MODELS	T2R MODELS
1	1059-0502	HS2, TOP 4W RF	1	
2	225180	INSULATION 1/8"	1	
3	155680	NUT,KEPS 8-32 HEX ZP	72	
4	512120	TERMINAL,MULTIPLIER - 34P2156	4	
5	222603	WIRE, JUMPER HS2 HEAT ELEMENT COM.	4	
6	158312	THERMOSTAT,HI-LIMIT 300 DEG W/FLANGE	4	
7	225174	Heater, 4 wide, 208V	8	
	229342	Heater, 4 wide, 240V (230 & 240V Units)	8	
Not shown	158279	RTD, 1000 OHM-MEDIUM	A/R	
8	225184	DUKE DAY PART PCB	1	
9	225171	SPACER ROUND 1/4" X 1/8" IS DIA .115	4	
10	223470	NUT, 4-40 NYLON LOCKNUT	6	8
11	166111	MODULAR,JACK IP67	1	
12	1059-0723	HS2,MENU BAR HOLE PLUG	1	-
13	222170	CORD POWER 15 AMP 208/240V	1	
	160448	CORD POWER 16 AMP 230V IEC60309	1	
14	1059-0435	HS2, ASY, CTRL VENT DUCT 2H	1	
15	225168	SPACER, ALUM .250 OD X .375 LENGTH X #8 SCREW	4	
16	1059-0537	HS2,CRTL MTG PLATE 2H PEMS	1	
17	1059-0445	ACCESS PANEL 2H (208/240V Units = 2)	1 or 2	
	1059-0571	ACCESS PANEL 2H CE (Control Side of 230V Units)	1	
18	225173	HEYCO, SNAP BUSHING OCB-625	7	8
19	10280050	SCREW,8-32X1-1/4FL PH SS MACHINE	4	
20	1059-0339	HS2, BASE PAN 4W	1	
21	169629	SWITCH,SEALED CARLING	1	
22	225236	USB Adapter	1	
23	225237	USB Cover	1	
24	279500	SCREW,8-32X1/2" PTHMS 18-8SS	61	
25	1059-0394	HS2, BEZEL DAYPART MYLAR	1	
26	225165	MYLAR DAYPART	1	
27	1059-0714	HS2, ASY MENU BAR 4W	1	2
28	223450	SCREW, 8-32X3/8" PHIL TRUSS HD MACHINE, S/S NYLOK PATCH	8	
29	1059-0499	HS2, PAN STOP COVER	8	
30	225238	HS2, Spacer Cover Stop	8	
31	156602	Pan, Single Handle	1	
32	156634	Pan, Double Handle	1	
33	E030951	TRIVET, METAL, 1/3 SIZE PAN	6	
34	1059-0498	HS2 Pan Cover	1	
35	166100	SPACER,TUBE NYLON 0.250D X 0.125ID X 0.375H	1	
36	166184	USB. 2.0 MALE TO FEMALE RT. ANGLE ADAPTER	1	
37	176770	ACM PCB ASY,FBBT	1	
38	ELC0001-4	PCB, IO3, HS2	2	
39	166102	WASHER,0.375OD X 0.13ID X 0.062THK	1	
40	1059-0384	HS2, BUZZER MTG BRKT	1	
41	512766	BUZZER, ULTRA LOUD CONTINUOUS TONE	1	
42	225181	ASY, TIMER BAR 5V POWER PCB	1	2
43	166114	TRIAC PCB ASY	2	
44	166101	SUPPORT,LOCK-IN PC	15	
45	225185	PCB, 12V PWR 5A 208/230V	1	
46	120158	SPACER,NUT .375"	2	
47	225219	Harness, timer bar exit, quad	1	
48	225216	Day part harness	1	
Not shown	225221	HARNESS IDC 12V & CAN	1	
Not shown	166105	JUMPER,HEAT TRIAC PCB	1	
Not shown	225234	HARNESS MAIN AC – HS2	1	
Not shown	212106	CONNECTOR WAGO 5 CONDUCTOR 222-415	2	
Not shown	166110	HARNESS,AC DMC 2X2	1	
Not shown	118027	Cable, CAT5E Ethernet, Black, 25ft	1	

Table: PL-3 TIMER BAR MODELS (HS2-24-2084/2304/2404 T1R & T2R)

TIMER BAR MODELS (HS2-34-2086/2306/2406 T1R & T2R)

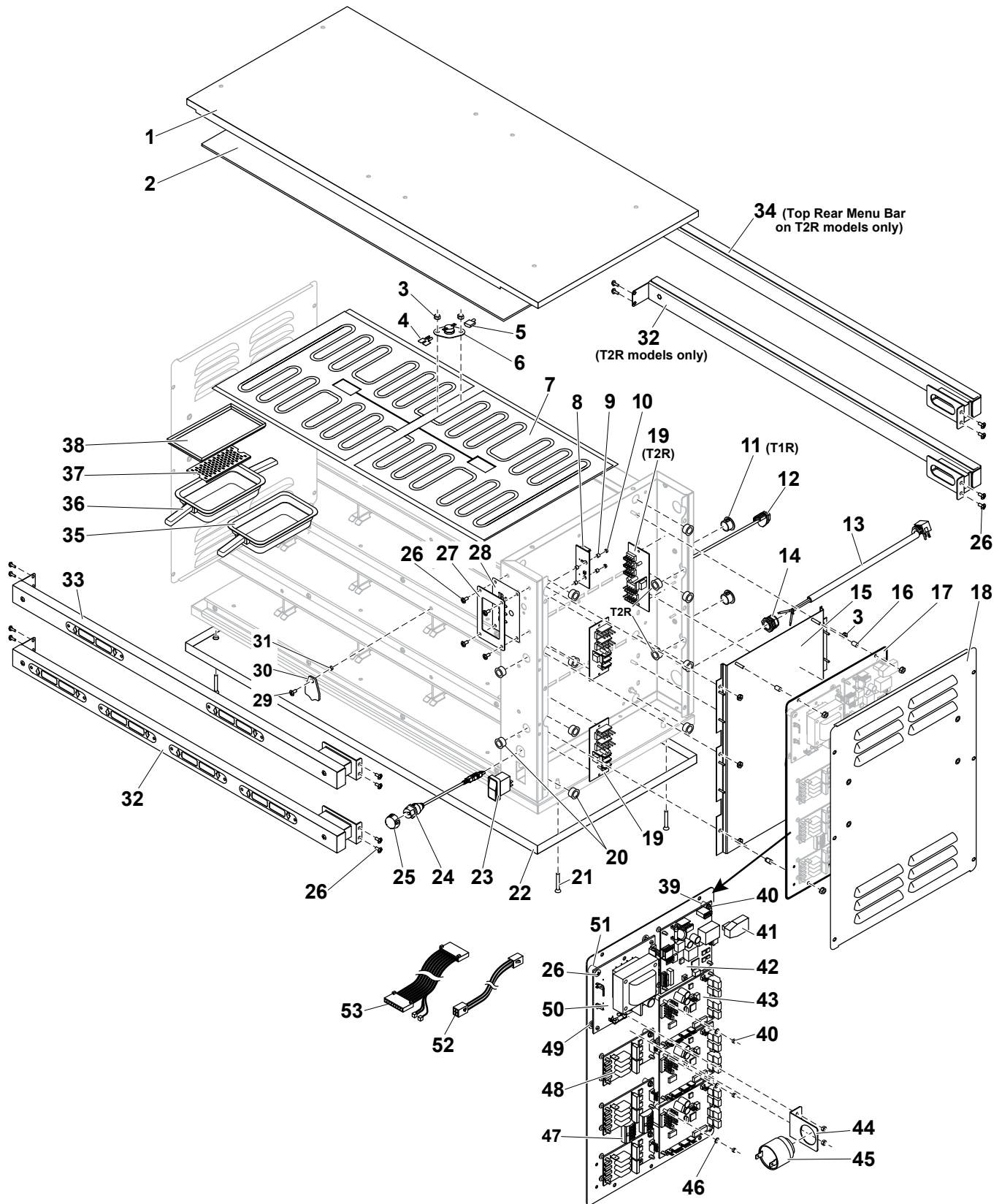


Figure: PL-4 TIMER BAR MODELS (HS2-34-2086/2306/2406 T1R & T2R)

TIMER BAR MODELS (HS2-34-2086/2306/2406 T1R & T2R)

ITEM	PN	DESCRIPTION	QTY	
			T1R MODELS	T2R MODELS
1	1059-0502	HS2, TOP 4W RF		1
2	225180	INSULATION 1/8"		1
3	155680	NUT,KEPS 8-32 HEX ZP		82
4	512120	TERMINAL,MULTIPLIER - 34P2156		6
5	222603	WIRE, JUMPER HS2 HEAT ELEMENT COM.		6
6	158312	THERMOSTAT,HI-LIMIT 300 DEG W/FLANGE		6
7	225174	Heater, 4 wide, 208V		12
	229342	Heater, 4 wide, 240V (230 & 240V Units)		12
Not shown	158279	RTD, 1000 OHM-MEDIUM		A/R
8	225184	DUKE DAY PART PCB		1
9	225171	SPACER ROUND 1/4" X 1/8" IS DIA .115		28
10	223470	NUT, 4-40 NYLON LOCKNUT	23	27
11	1059-0723	HS2,MENU BAR HOLE PLUG	2	-
12	166111	MODULAR,JACK IP67		1
13	166070	CORD POWER 20 AMP 208/240		1
	160448	CORD POWER 16 AMP 230V IEC60309		1
14	160486	STRAIN RELIEF,CORD		1
15	1059-0420	HS2, ASY, VENT DUCT		1
16	225168	SPACER, ALUM .250 OD X .375 LENGTH X #8 SCREW		4
17	1059-0536	HS2,CRTL MTG PLATE 3H PEMS		1
18	1059-0379	HS2, ASY ACCESS PANEL 3H (208/240V Units = 2)		1 or 2
	1059-0546	ACCESS PANEL 3H CE (Control Side of 230V Units)		1
19	225181	ASY, TIMER BAR 5V POWER PCB	2	3
20	225173	HEYCO, SNAP BUSHING OCB-625	10	12
21	10280050	SCREW,8-32X1-1/4FL PH SS MACHINE		4
22	1059-0339	HS2, BASE PAN 4W		1
23	169629	SWITCH,SEALED CARLING		1
24	225236	USB Adapter		1
25	225237	USB Cover		1
26	279500	SCREW,8-32X1/2" PTHMS 18-8SS		76
27	1059-0394	HS2, BEZEL DAYPART MYLAR		1
28	225165	MYLAR DAYPART		1
29	223450	SCREW, 8-32X3/8" PHIL TRUSS HD MACHINE, S/S NYLOK PATCH		12
30	1059-0499	HS2, PAN STOP COVER		12
31	225238	HS2, Spacer Cover Stop		12
32	1059-0714	HS2, ASY MENU BAR 4W	1	2
33	1059-0713	HS2, ASY TOP MENU BAR 4W	1	-
34	1059-0726	HS2, ASY TOP REAR MENU BAR 4W	-	1
35	156602	Pan, Single Handle		1
36	156634	Pan, Double Handle		1
37	E030951	TRIVET, METAL, 1/3 SIZE PAN		4
38	1059-0498	HS2,PAN COVER		8
39	166100	SPACER,TUBE NYLON 0.25OD X 0.125ID X 0.375H		1
40	223470	NUT, 4-40 NYLON LOCKNUT		7
41	166184	USB. 2.0 MALE TO FEMALE RT. ANGLE ADAPTER		1
42	176770	ACM PCB ASY,FBBT		1
43	ELC0001-4	PCB, IO3, HS2		3
44	1059-0384	HS2, BUZZER MTG BRKT		1
45	512766	BUZZER, ULTRA LOUD CONTINUOUS TONE		1
46	166102	WASHER,0.375OD X 0.13ID X 0.062THK		1
47	212106	CONNECTOR WAGO 5 CONDUCTOR 222-415		2
48	166114	TRIAC PCB ASY		3
49	166101	SUPPORT,LOCK-IN PC		1
50	225185	PCB, 12V PWR 5A 208/230V		1
51	120158	SPACER,NUT .375"		2
52	225219	Harness, timer bar exit, quad	2	3
53	225216	Day part harness		1
Not shown	225221	HARNESS IDC 12V & CAN		1
Not shown	166105	JUMPER,HEAT TRIAC PCB		3
Not shown	225234	HARNESS MAIN AC – HS2		1
Not shown	166109	HARNESS,AC DMC 2X4		1
Not shown	166104	JUMPER,IO TO IO	-	1
Not shown	225220	Harness, timer bar exit, dual	-	1
Not shown	118027	Cable, CAT5E Ethernet, Black, 25ft		1

Table: PL-4 TIMER BAR MODELS (HS2-34-2086/2306/2406 T1R & T2R)

TIMER BAR MODELS (HS2-42-2084/2304/2404 T1R & T2R)

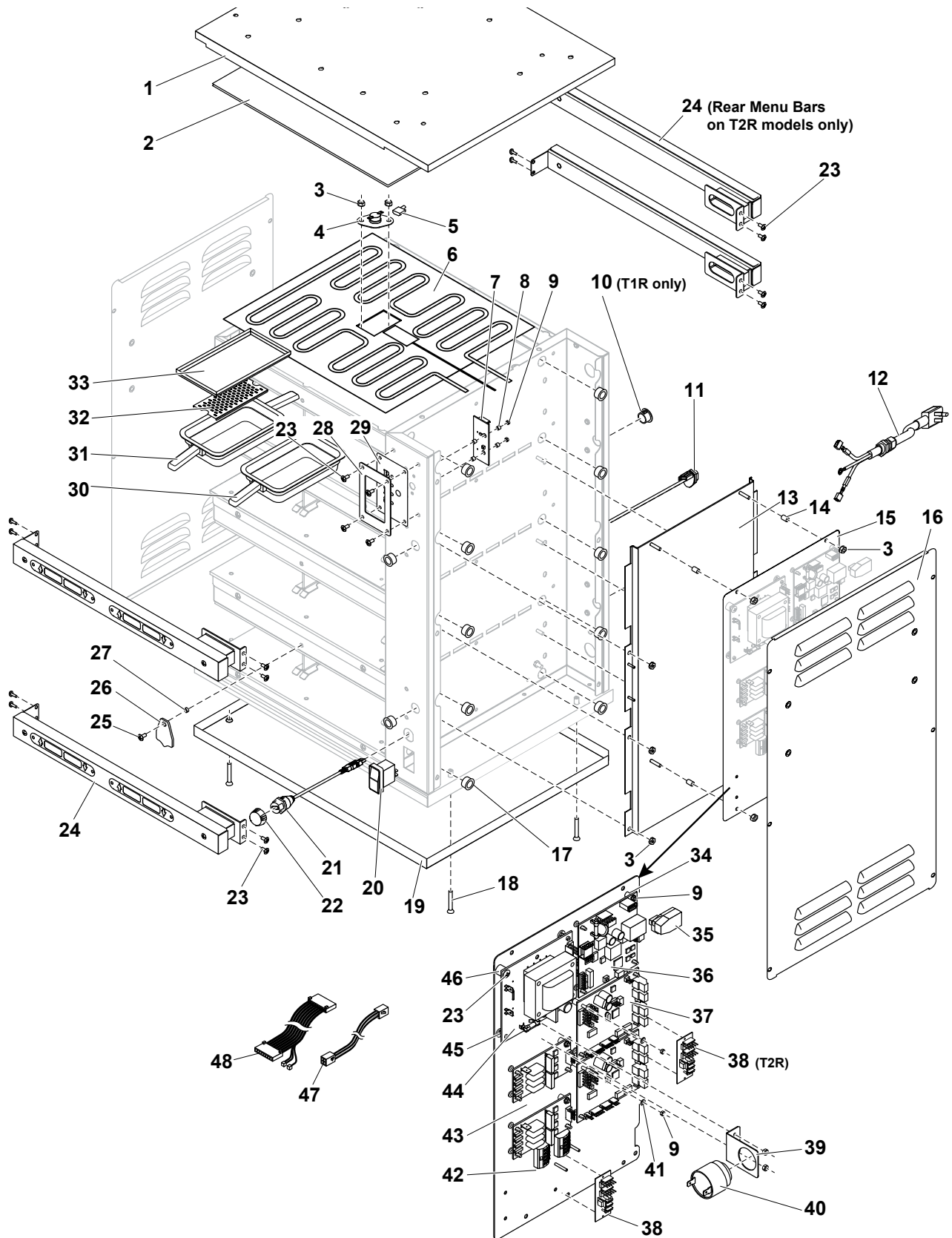


Figure: PL-5 TIMER BAR MODELS (HS2-42-2084/2304/2404 T1R & T2R)

TIMER BAR MODELS (HS2-42-2084/2304/2404 T1R & T2R)

ITEM	PN	DESCRIPTION	QTY	
			T1R MODELS	T2R MODELS
1	1059-0521	HS2,TOP 2W RF		1
2	1059-0528	HS2, INSULATION 1/8" 2W		1
3	155680	NUT,KEPS 8-32 HEX ZP		107
4	158312	THERMOSTAT,HI-LIMIT 300 DEG W/FLANGE		8
5	222603	WIRE, JUMPER HS2 HEAT ELEMENT COM.		8
6	225225	Heater, 2 wide 208v		8
	229340	Heater, 2 wide 240v (230 & 240V Units)		8
Not shown	158279	RTD, 1000 OHM-MEDIUM		A/R
7	225184	DUKE DAY PART PCB		1
8	225171	SPACER ROUND 1/4" X 1/8" IS DIA .115		12
9	223470	NUT, 4-40 NYLON LOCKNUT	17	19
10	1059-0723	HS2,MENU BAR HOLE PLUG	2	-
11	166111	MODULAR,JACK IP67		1
12	222170	CORD POWER 15 AMP 208/240V		1
	160448	CORD POWER 16 AMP 230V IEC60309		1
13	1059-0531	HS2,ASY,VENT DUCT 4H		1
14	225168	SPACER, ALUM .250 OD X .375 LENGTH X #8 SCREW		4
15	1059-0536	HS2,CRTL MTG PLATE 3H PEMS		1
16	1059-0496	ACCESS PANEL 4H (208/240V Units = 2)		1 or 2
	1059-0574	ACCESS PANEL 4H CE (Control Side of 230V Units)		1
17	225173	HEYCO, SNAP BUSHING OCB-625	12	14
18	10280050	SCREW,8-32X1-1/4FL PH SS MACHINE		4
19	1059-0456	HS2, BASE PAN 2W		1
20	169629	SWITCH,SEALED CARLING		1
21	225236	USB Adapter		1
22	225237	USB Cover		1
23	279500	SCREW,8-32X1/2" PTHMS 18-8SS		70
24	1059-0750	HS2,ASY MENU BAR 2W	2	4
25	223450	SCREW, 8-32X3/8" PHIL TRUSS HD MACHINE, S/S NYLOK PATCH		8
26	1059-0499	HS2, PAN STOP COVER		8
27	225238	HS2, Spacer Cover Stop		8
28	1059-0394	HS2, BEZEL DAYPART MYLAR		1
29	225165	MYLAR DAYPART		1
30	156602	Pan, Single Handle		1
31	156634	Pan, Double Handle		1
32	E030951	TRIVET, METAL, 1/3 SIZE PAN		2
33	1059-0498	HS2,PAN COVER		6
34	166100	SPACER,TUBE NYLON 0.25OD X 0.125ID X 0.375H		1
35	166184	USB. 2.0 MALE TO FEMALE RT. ANGLE ADAPTER		1
36	176770	ACM PCB ASY,FBBT		1
37	ELC0001-4	PCB,IO3,HS2		2
38	225181	ASY, TIMER BAR 5V POWER PCB	1	2
39	1059-0384	HS2, BUZZER MTG BRKT		1
40	512766	BUZZER, ULTRA LOUD CONTINUOUS TONE		1
41	166102	WASHER,0.375OD X 0.13ID X 0.062THK		2
42	212106	CONNECTOR WAGO 5 CONDUCTOR 222-415		2
43	166114	TRIAC PCB ASY		2
44	120011	PCB,12V PWR 208/230V		1
45	166101	SUPPORT,LOCK-IN PC		1
46	120158	SPACER,NUT .375"		2
47	225219	Harness, timer bar exit, quad	2	4
48	225216	Day part harness		1
Not shown	225221	HARNESS IDC 12V & CAN		1
Not shown	166105	JUMPER,HEAT TRIAC PCB		2
Not shown	225234	HARNESS MAIN AC – HS2		1
Not shown	225255	HS2 AC 4X2		1
Not shown	118027	Cable, CAT5E Ethernet, Black, 25ft		1

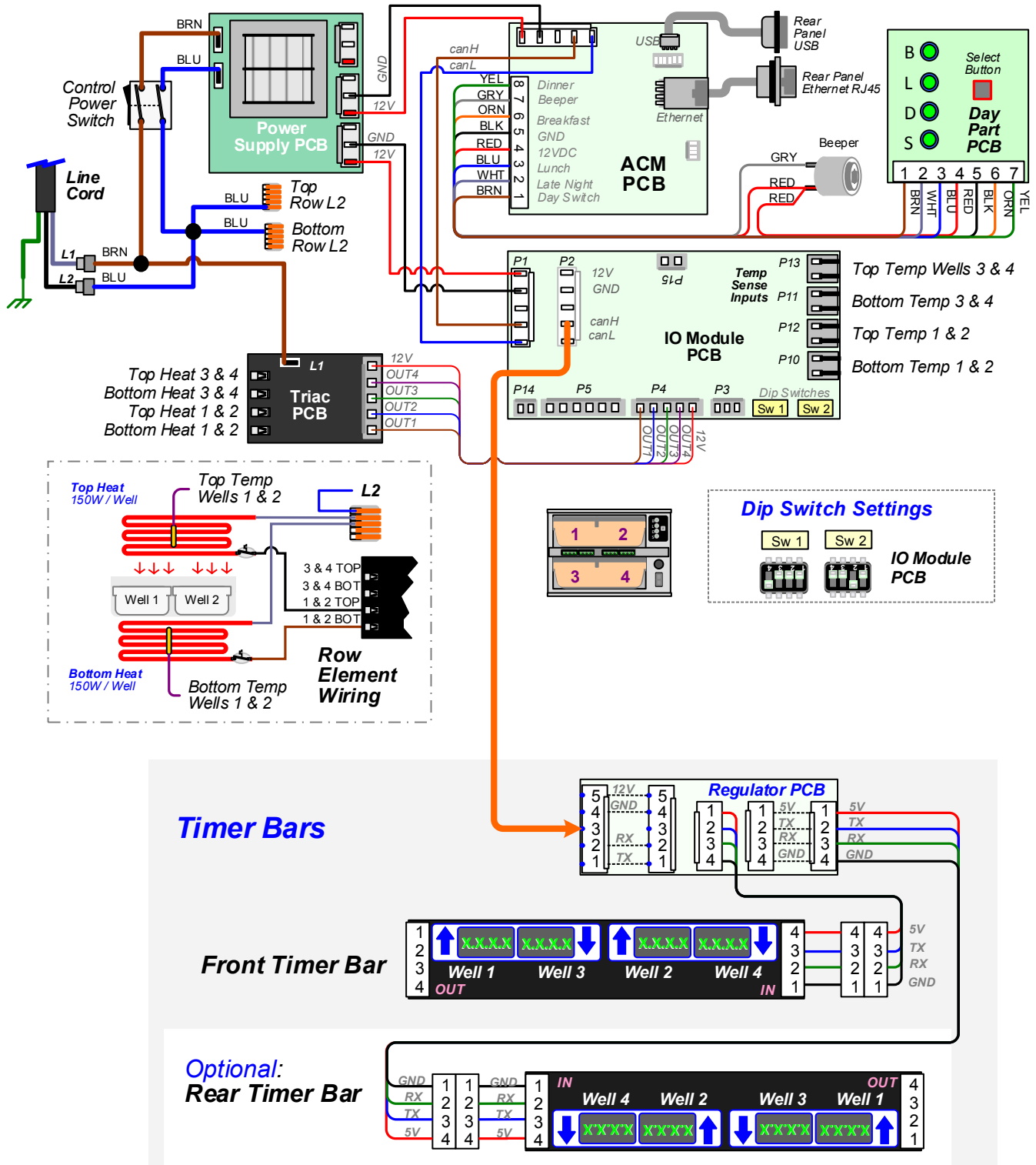
Table: PL-5 TIMER BAR MODELS (HS2-42-2084/2304/2404 T1R & T2R)

WIRING DIAGRAMS

HS2-22 MODELS

WIRING DIAGRAM 2x2 HS2

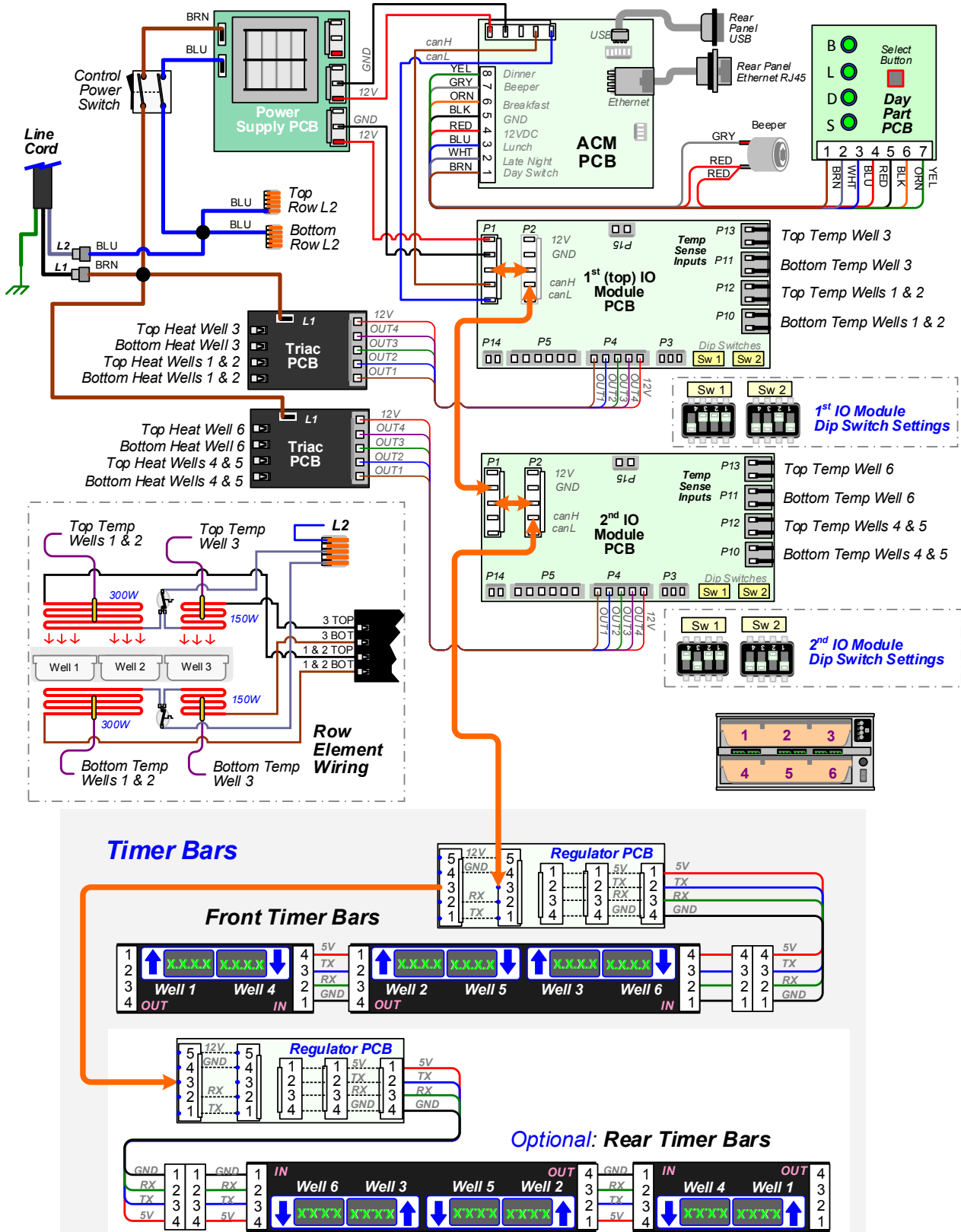
225247 Rev. C 6/1/17



HS2-23 MODELS

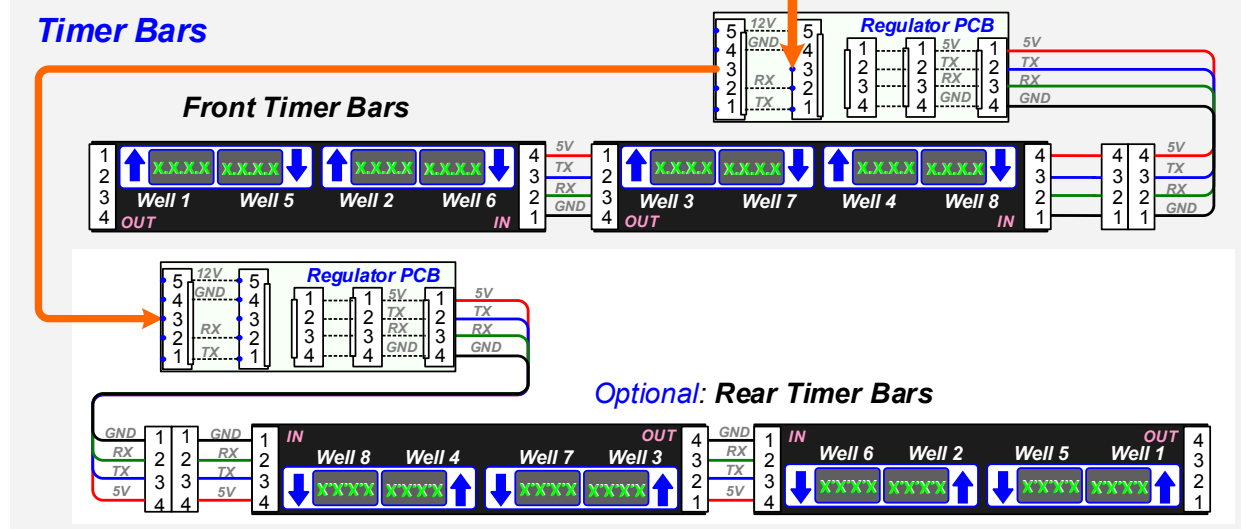
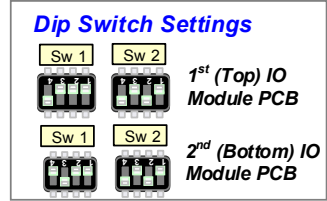
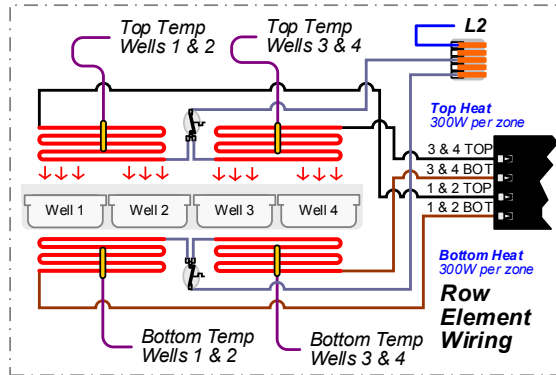
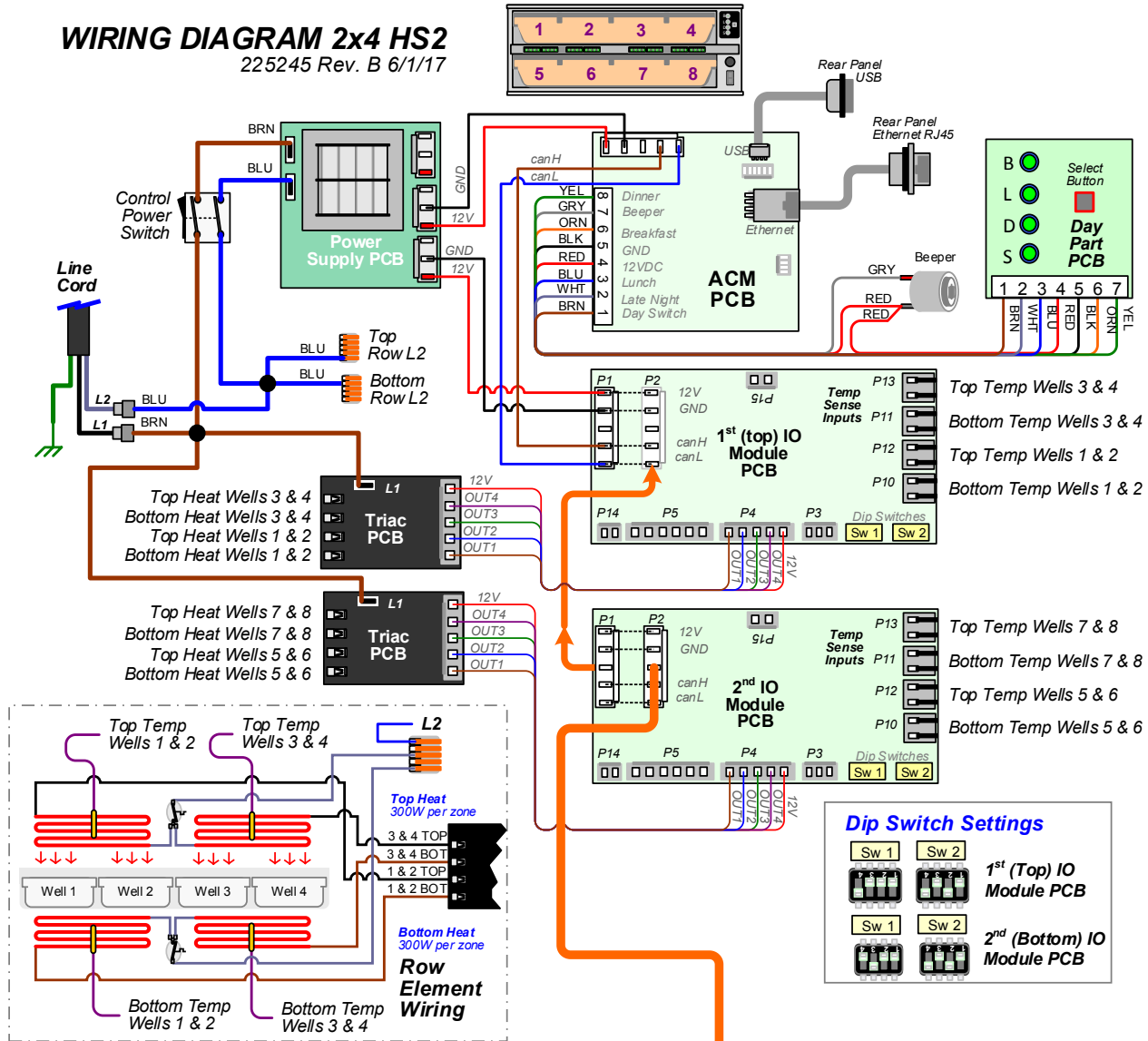
Wire Diagram - HS2 Zoned 2 x 3

ELC0131 Rev. B (2x3_4z) 6/1/17



HS2-24 MODELS

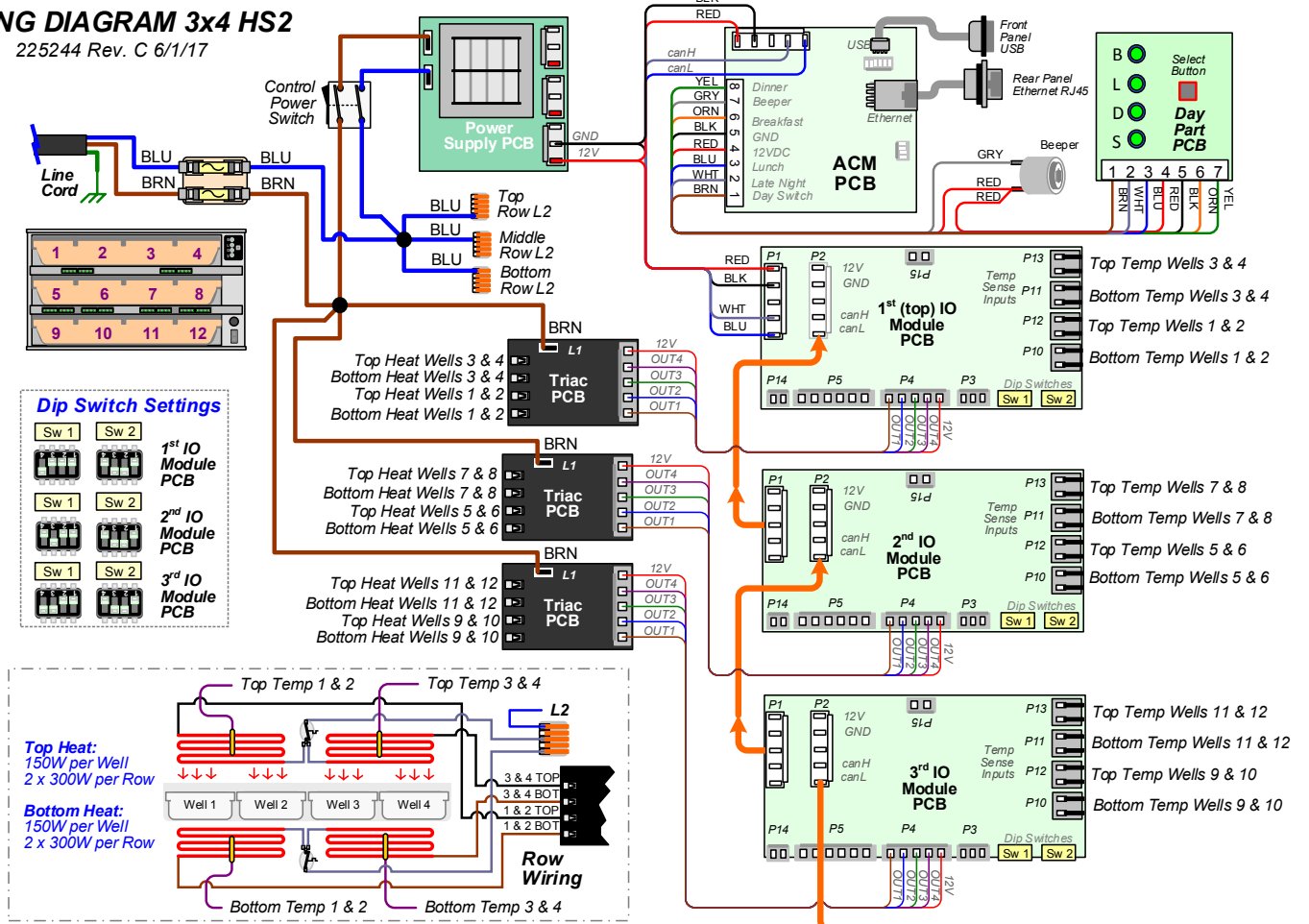
WIRING DIAGRAM 2x4 HS2 225245 Rev. B 6/1/17



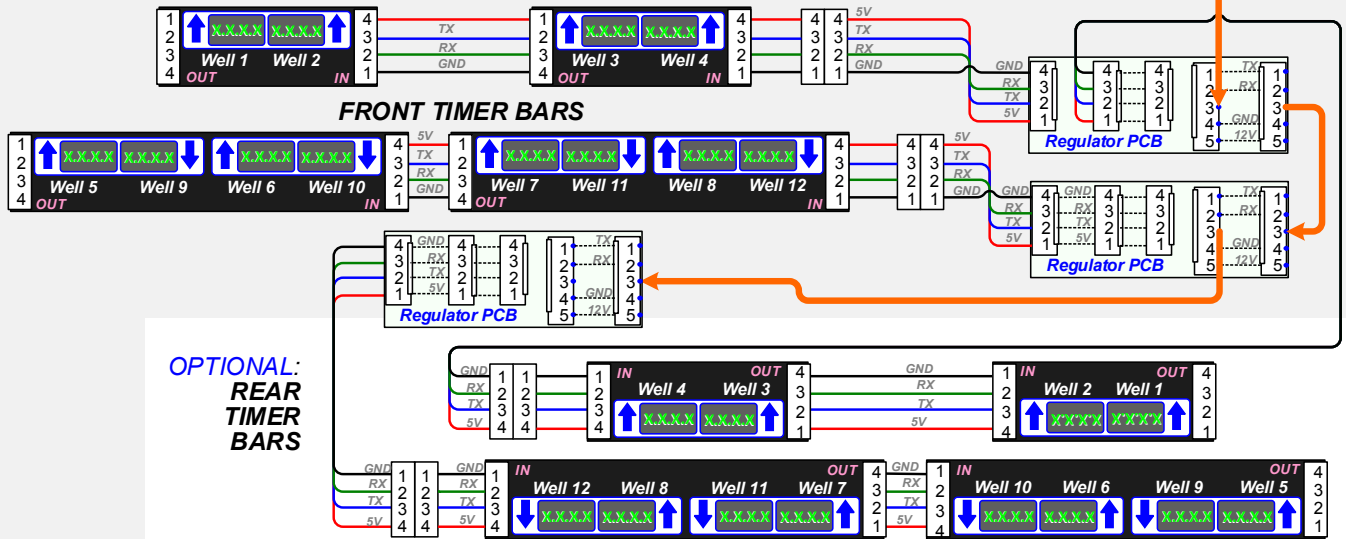
HS2-34 MODELS

WIRING DIAGRAM 3x4 HS2

225244 Rev. C 6/1/17

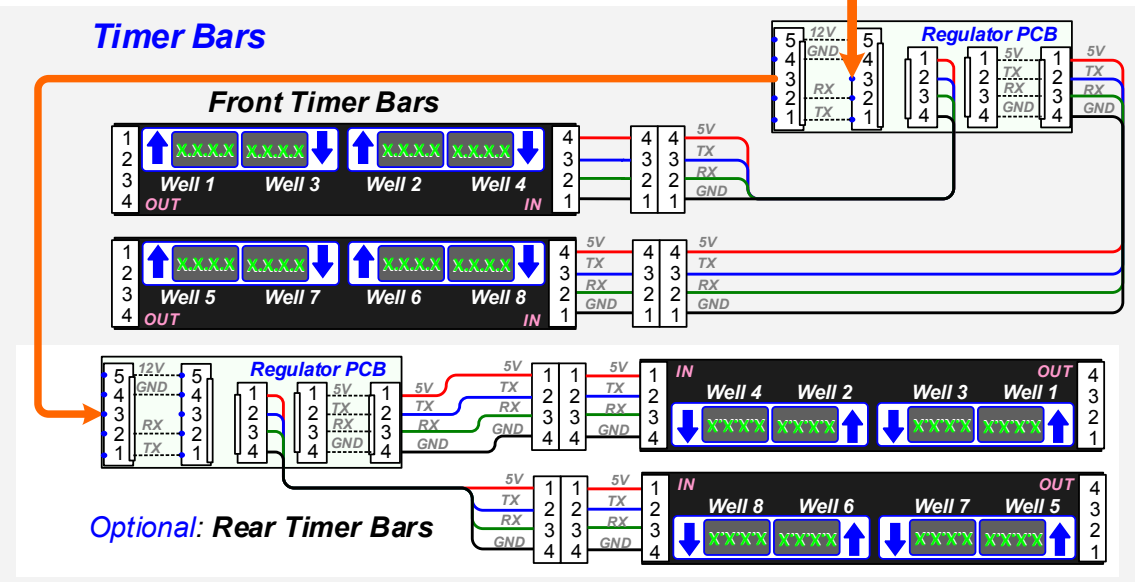
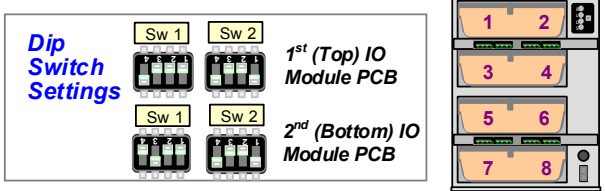
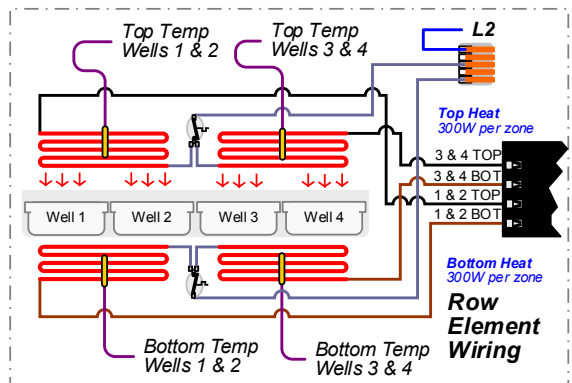
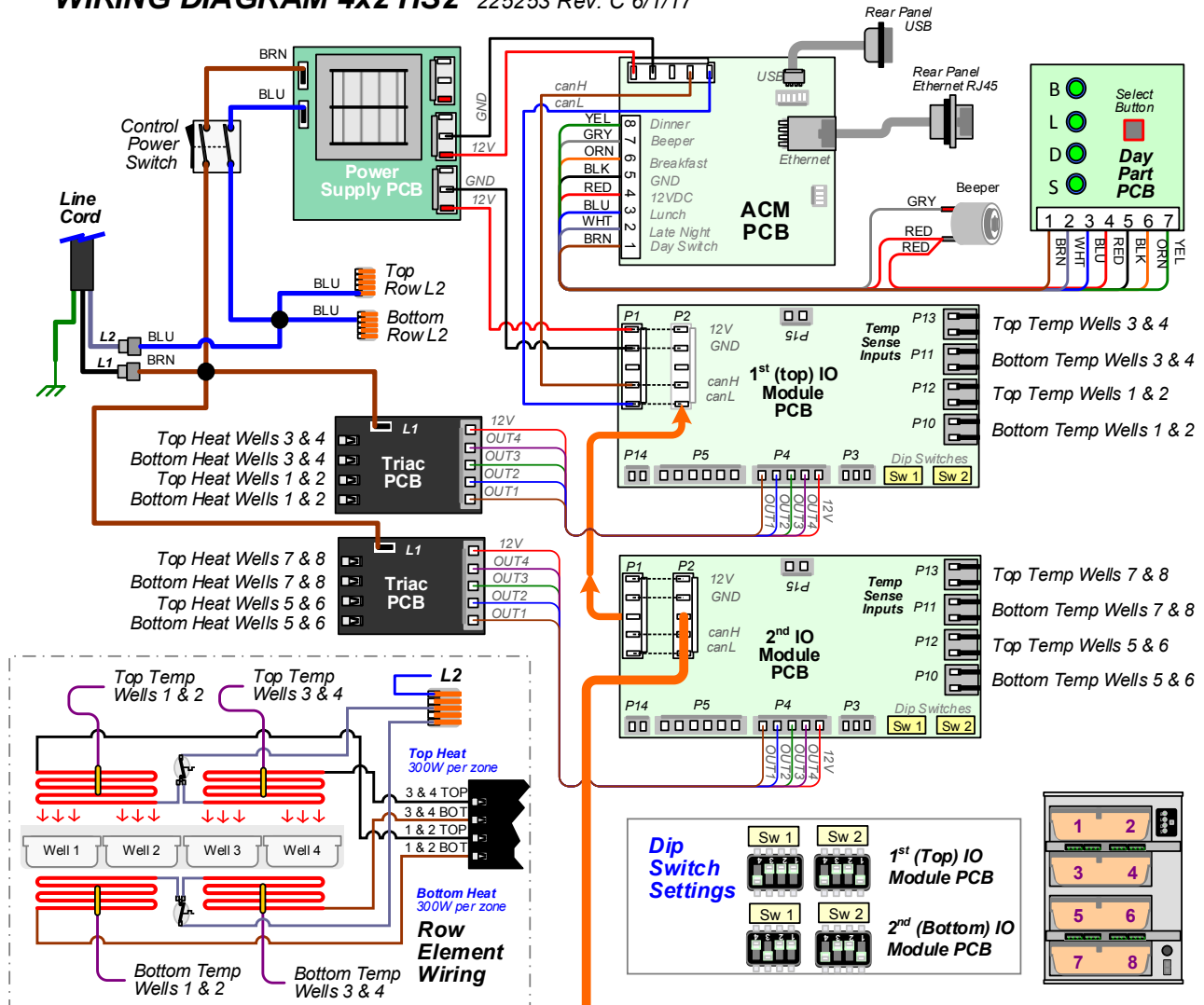


Timer Bars



HS2-42 MODELS

WIRING DIAGRAM 4x2 HS2 225253 Rev. C 6/1/17



NOTES



"Your Solutions Partner"

Duke Manufacturing Company

**2305 N. Broadway
St. Louis, MO 63102
Phone: 314-231-1130
Toll Free: 1-800-735-3853
Fax: 314-231-5074
www.dukemfg.com**