



*Your Solutions Partner*

# **Instruction Manual**

## **INFRARED HEATSINK™ HOLDING UNIT MANAGER'S WEB PROGRAMMING GUIDE**



**IMPORTANT INFORMATION, READ BEFORE USE.  
PLEASE SAVE THESE INSTRUCTIONS.**

---

*This manual is Copyright © 2015 Duke Manufacturing Co. All rights reserved.  
Reproduction without written permission is prohibited. Duke is a registered  
trademark of the Duke Manufacturing Co.*

### **Duke Manufacturing Co.**

**2305 N. Broadway  
St. Louis, MO 63102  
Phone: 314-231-1130  
Toll Free: 1-800-735-3853  
Fax: 314-231-5074**

**[www.dukemfg.com](http://www.dukemfg.com)**

---

**P/N 166284A  
10/19/2015**



## CREATING A NEW MENU

Open the web browser.

Type or paste the website address into the browser address dialog box and press Enter.



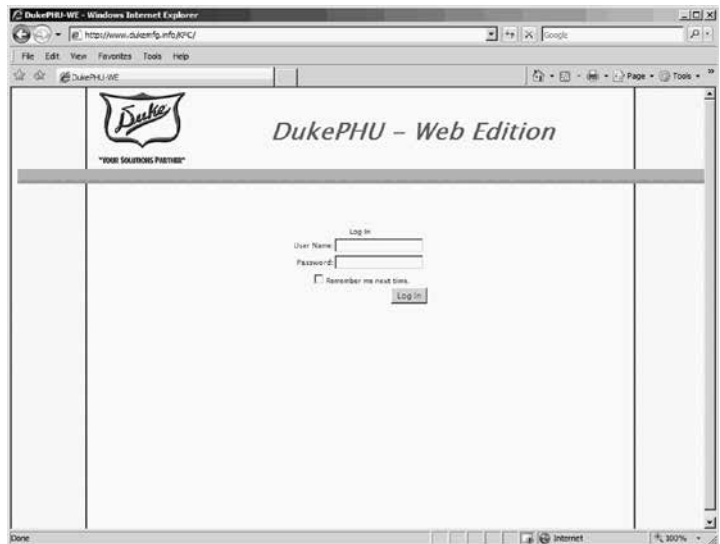
Using the mouse left click the User Name field.

Type the assigned User Name.

Left click the Password field.

Type the password.

Left click the Log In button.



Cabinets are configured using the Menu Creator tab.



Select the PHU cabinet that will be programmed.

EX: 2X3 IRHS



Select the day part to be programmed. If only one day part is required, select Day Part All.

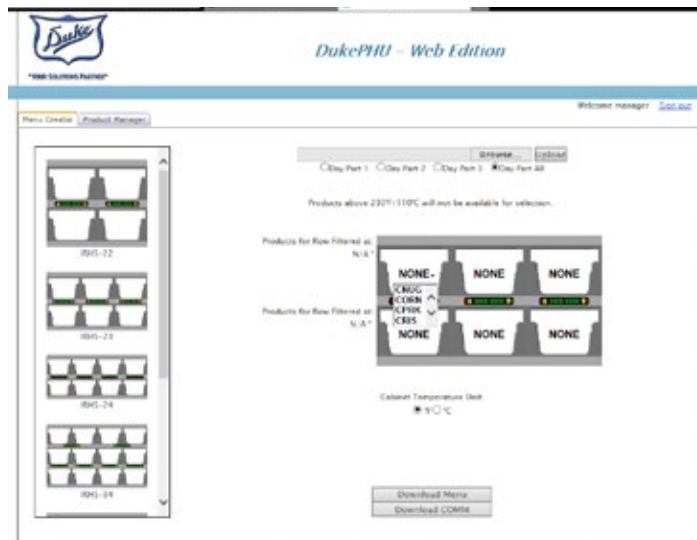
Select the Cabinet Temperature Units F° or C°.

Next, Move the cursor to the PHU well to be programmed.

Place the cursor over the well to be programmed and left click to display the list of choices.

Scroll through the drop down list and left click the item to be programmed.

If a product is selected in error or different temp products are desired, all wells for that heat zone must be reset to "NONE".



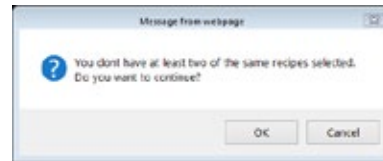
Repeat the programming steps for each Day Part that has a different menu.

"NONE" should not be in any well. Insert an empty Flash, sometimes called a Jump, Drive into an open USB port on the computer.

Scroll to Download Menu button and left click it.



Click "OK".

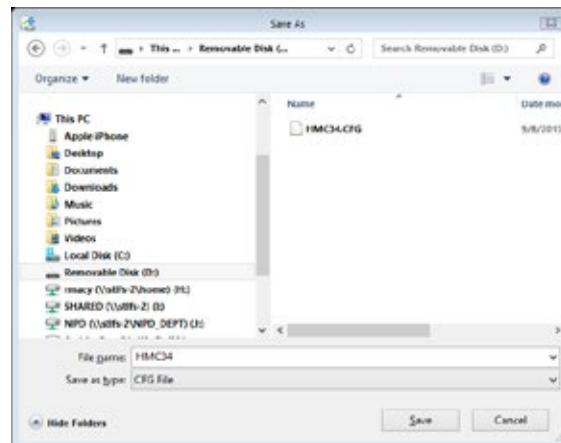


Click Save in the "Do you want to save this file?" dialog box.

Select "SaveAs".



Save to "Jump Drive".

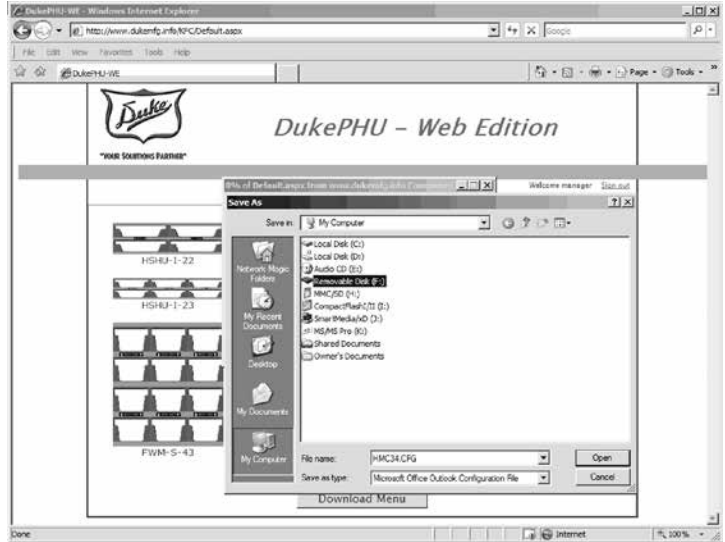


The Save As dialog box will be displayed. The appearance of the screen may vary depending on the computer settings.

Using the left mouse button, double click the My Computer icon.

Note: Depending on computer settings, you may be directed to the flash drive automatically.

Do not change the file name. The IRHS will not recognize any modified file names. Name must remain "HCM34.cfg".



Using the mouse select the Flash drive from the list of available drives.

Next, left click the Open button.

Wait until the file is completely saved on the Flash drive.

Use the Flash drive's eject option to safely remove the Flash drive from the computers USB port.



Move the power switch on the Duke IRHS cabinet to its ON position.

Insert the Flash drive into the IRHS cabinet's USB port.

The program download will start automatically. If it does not start, turn the IRHS cabinet OFF and back ON again.

The IRHS cabinet will make a chirping sound when the download is complete.

Remove the Flash Drive from the IRHS cabinet's USB port.



## REVISING A CABINET SETTING

Insert a blank jump drive into the IRHS. Ensure that the jump drive does not have any files on it before inserting it into the IRHS. If an HCM34.cfm file is on the jump drive it will overwrite the programming loaded in the IRHS.

If the program is on the jump drive and it is the last one loaded into the PHU insert the jump drive into a USB port on the computer.

Log onto the Website. On the Menu Creator click Browse.

Find the jump drive on the computer and locate the HCM34.cfm file.

Double click on the HCM34.cfm file. When it appears in the dialog box, click Upload.

The cabinet with all of its programmed products will appear.

Make the desired changes and repeat the download process.





*Your Solutions Partner*

## **Duke Manufacturing Co.**

2305 N. Broadway  
St. Louis, MO 63102  
Phone: 314-231-1130  
Toll Free: 1-800-735-3853  
Fax: 314-231-5074

[www.dukemfg.com](http://www.dukemfg.com)